

# RIVERWALK RESIDENCES

BY RIVERWALK HOMES, LLC

## INTRODUCING FT. WORTH'S PREMIER LIVE, WORK, PLAY, RESIDENCES

### DETAILS //

---

The Riverwalk Residences are located on the Trinity River at 4th Street, less than a mile from the downtown central business district and Sundance Square.

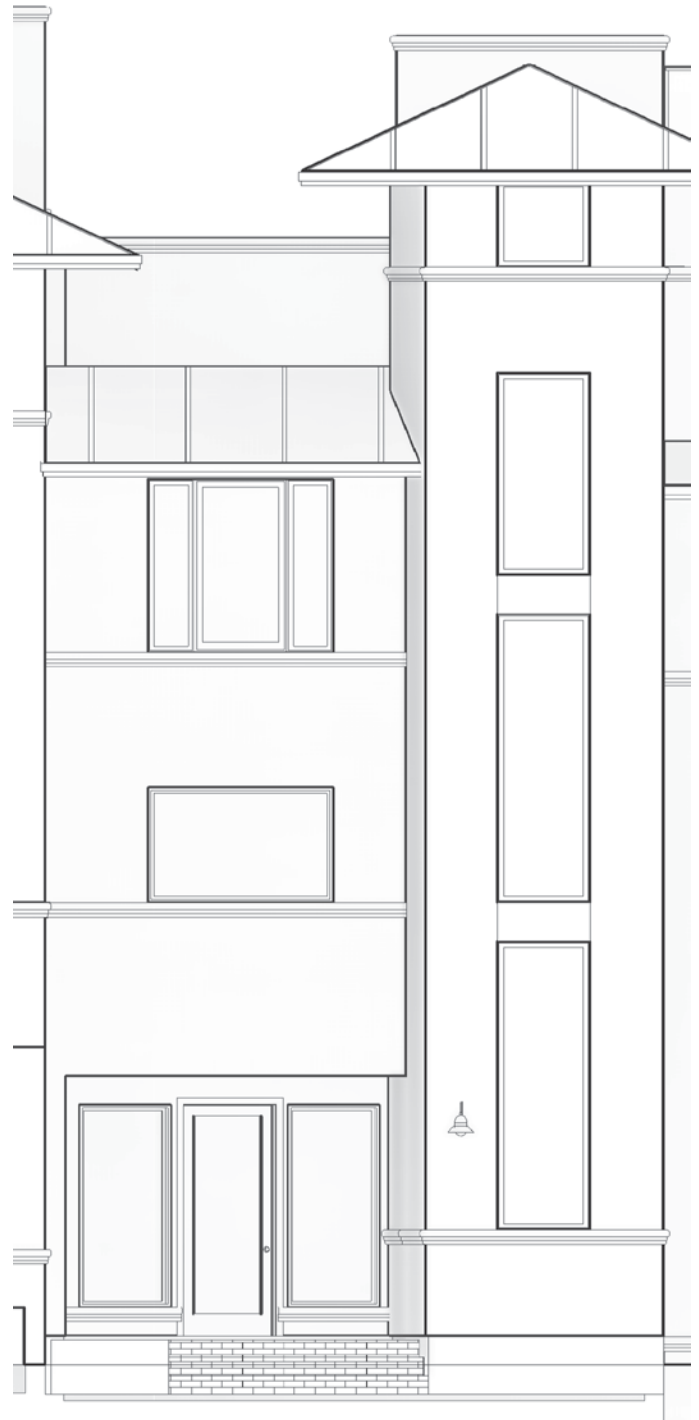
Here you will find a unification of the most innovative design concepts, efficient living space layouts, appliances, and finishes to provide today's premier near-downtown living experience.

The Riverwalk Residences also offer several opportunities for you to personalize the space based on your own individual taste and preferences.

### LOCATION BENEFITS //

---

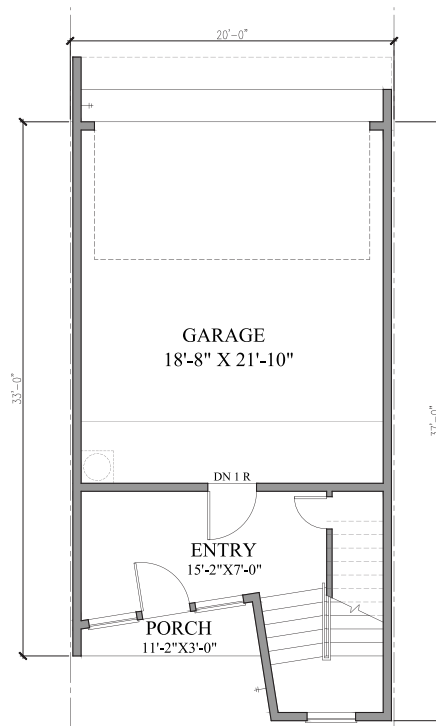
- Located on the Trinity River with immediate access to bike/walking trails, Top Golf, Martin House, and other coming entertainment and dining options.
- 5 Minutes from the downtown central business district and Sundance entertainment and dining district—the perfect location to live, work, and play
- The location provides immediate access to major freeways including I-35, I-30, and TX-121 as well as Trinity Railway express.



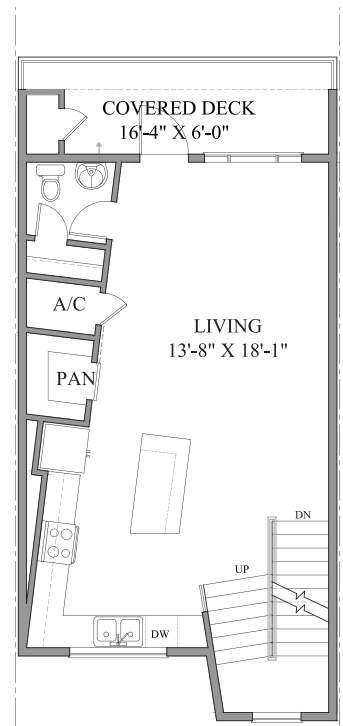
THE AMALFI

## INTERIOR FEATURES AND FINISHES //

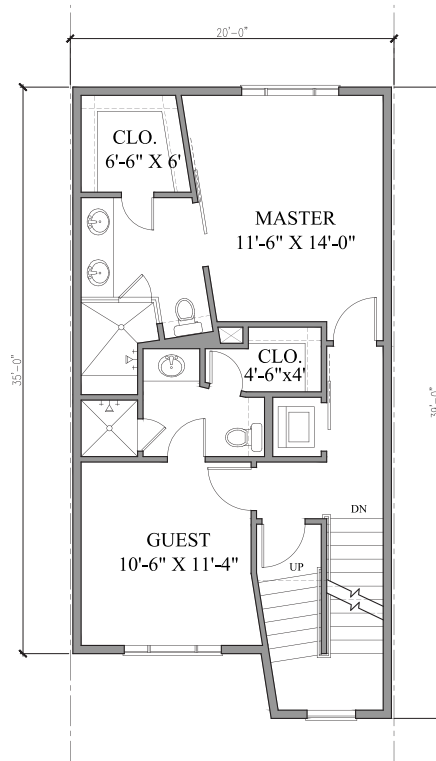
- Two bedroom, 1526 square feet
- Two car garage
- Rich hardwood flooring
- Grand stairway designs utilizing hardwood, steel, and traditional stairway options
- Spacious roof-top decks with amazing sunset and skyline views
- Open design kitchen, dining, and living room floor.
- Multiple appliance package options (Thermador, Bosch, Kitchen-Aid, GE)
- Gas appliances
- Gorgeous hardwood cabinetry
- Multiple countertop options including stone, granite, and or quartz countertops
- Spacious bathrooms, bedrooms, and walk-in closets
- Designer tile in entry, kitchen, utility, master, and secondary bath wet areas
- Full-sized and stackable washer & dryer options
- Kohler plumbing fixtures
- Fire sprinkler system, smoke detectors and carbon monoxide detectors throughout all homes
- Acoustically engineered shared walls
- Individual multi-zoned heating and cooling systems
- Choice of multiple custom interior paint colors
- Recessed can lighting for kitchen, fireplace, stairways, and front porch (per plan)
- Elongated commodes in all baths
- Decora style light switches



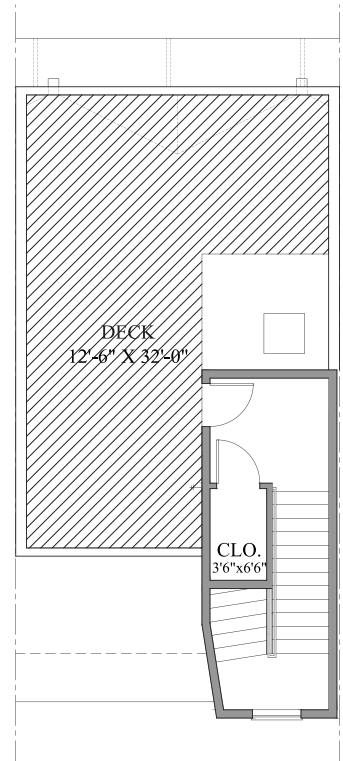
GROUND FLOOR



SECOND FLOOR



THIRD FLOOR



ROOF DECK

## THE AMALFI